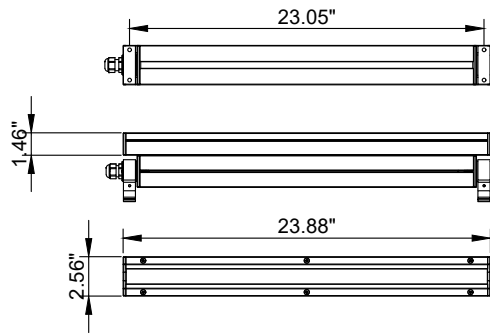


INSTALLATION AND SERVICE MANUAL

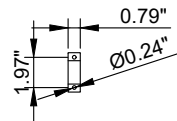
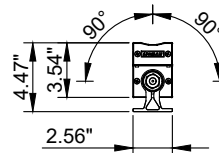
For installation of Light Linear LA 7 Surface Floodlight RGBW
Model. ULA-30013 and ULA-30014

PRODUCT DRAWING (DIMENSIONS)

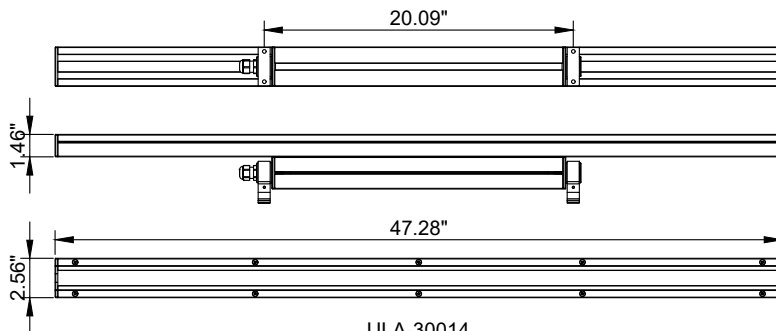
SUITABLE FOR WET LOCATIONS



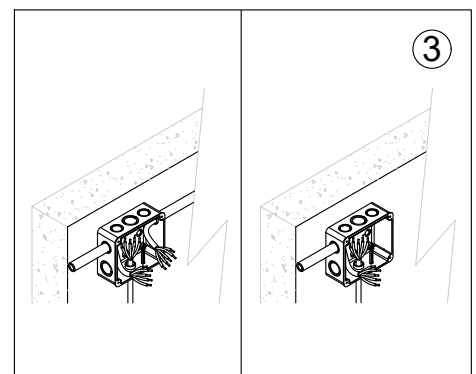
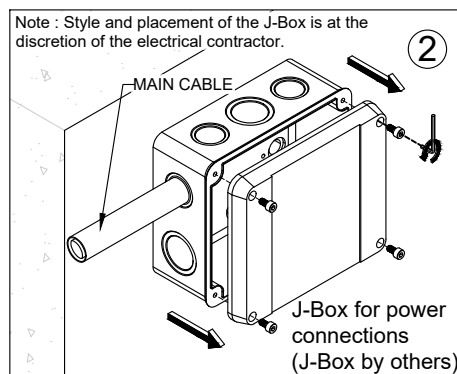
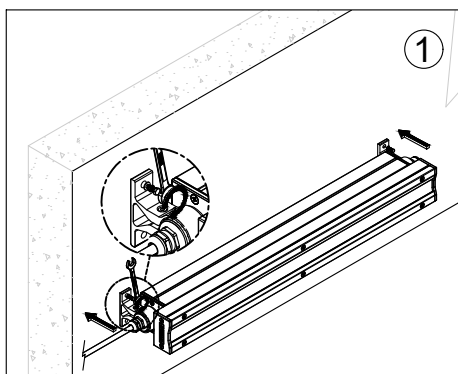
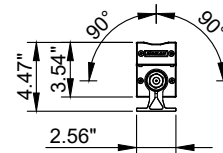
ULA-30013



MOUNTING DETAIL



ULA-30014



Notice to installer :

WIRING INSTRUCTIONS Warning : RISK OF FIRE AND ELECTRICAL SHOCK. : FIXTURE MUST BE INSTALLED BY A QUALIFIED ELECTRICIAN ONLY>FIXTURE IS INTENDED FOR INSTALLATION IN ACCORDANCE WITH THE NATIONAL ELECTRICAL CODE, LOCAL AND FEDERAL CODE SPECIFICATIONS. DISCONNECT POWER BEFORE SERVICING.

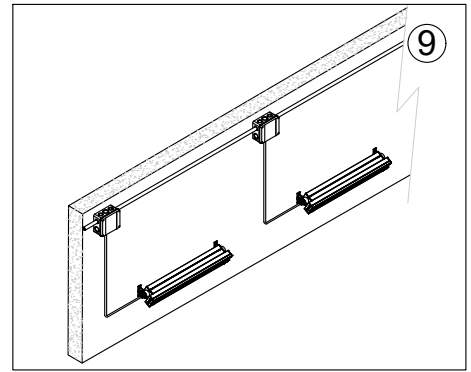
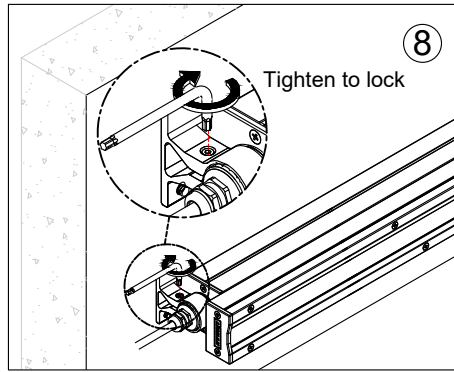
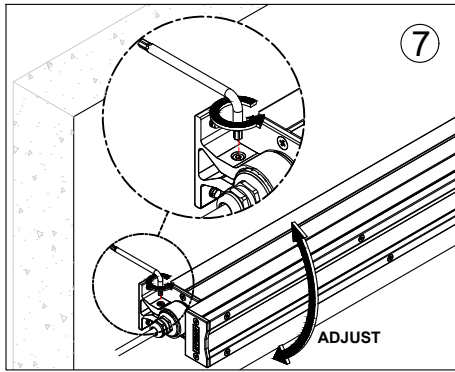
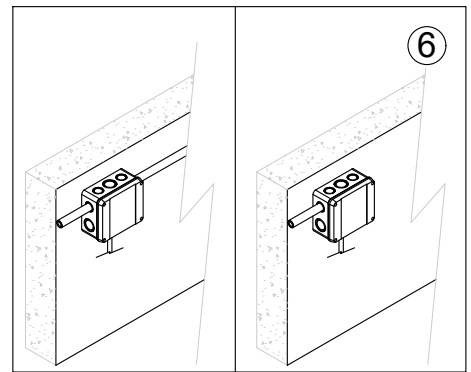
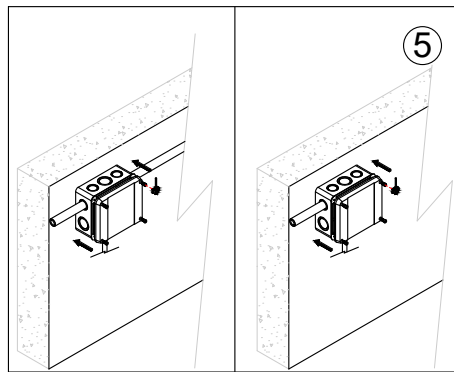
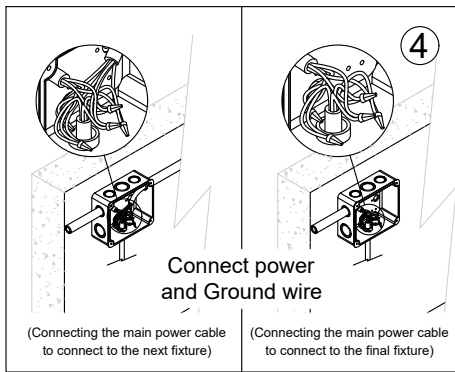
Ligman Lighting USA

7144 NE Progress Court, Hillsboro
Oregon, 97124, USA
Tel : 503 645 0500 | Fax : 503 645 8100

www.ligmanlightingusa.com

ULA-30013 23/09/25 REV.2
1/2

FM-TS-13-2/21-03-2568/Rev.5



DMX SYSTEM BLOCK DIAGRAM

